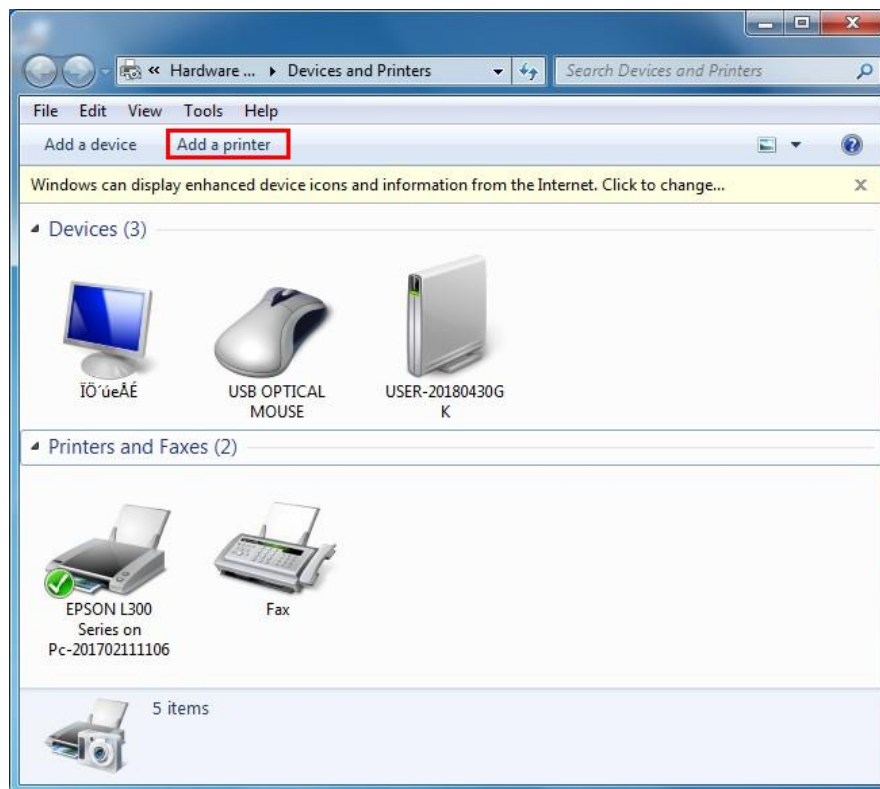


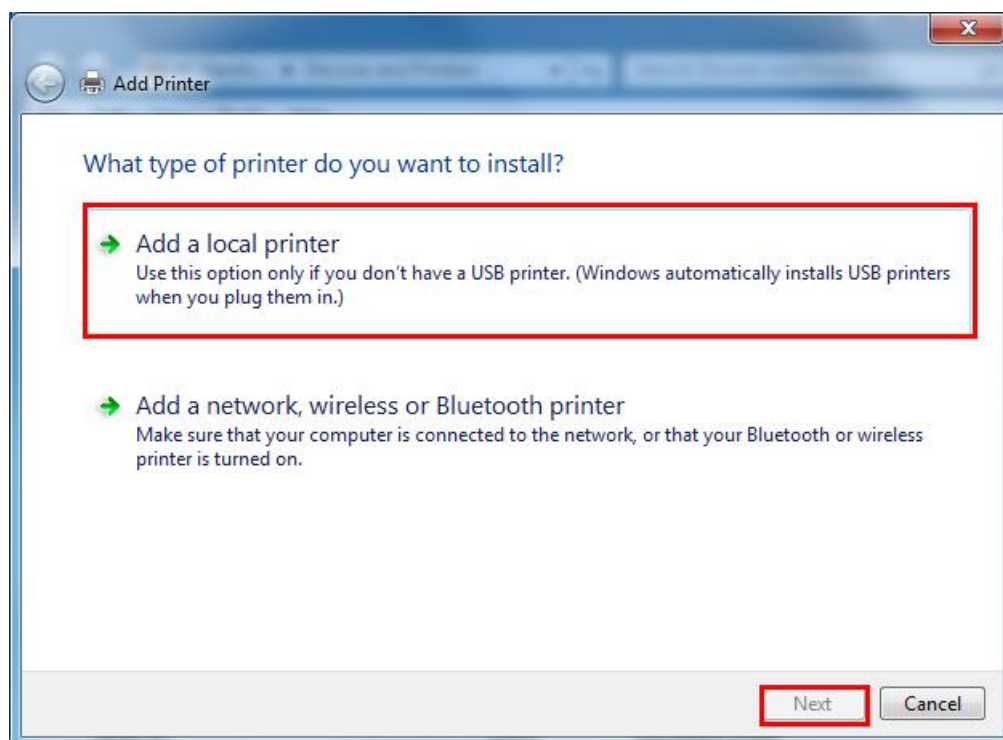
Method to add a new printer

Problems may happen during installation, please follow below steps to add a printer when you can not see driver icon shown on devices and printers

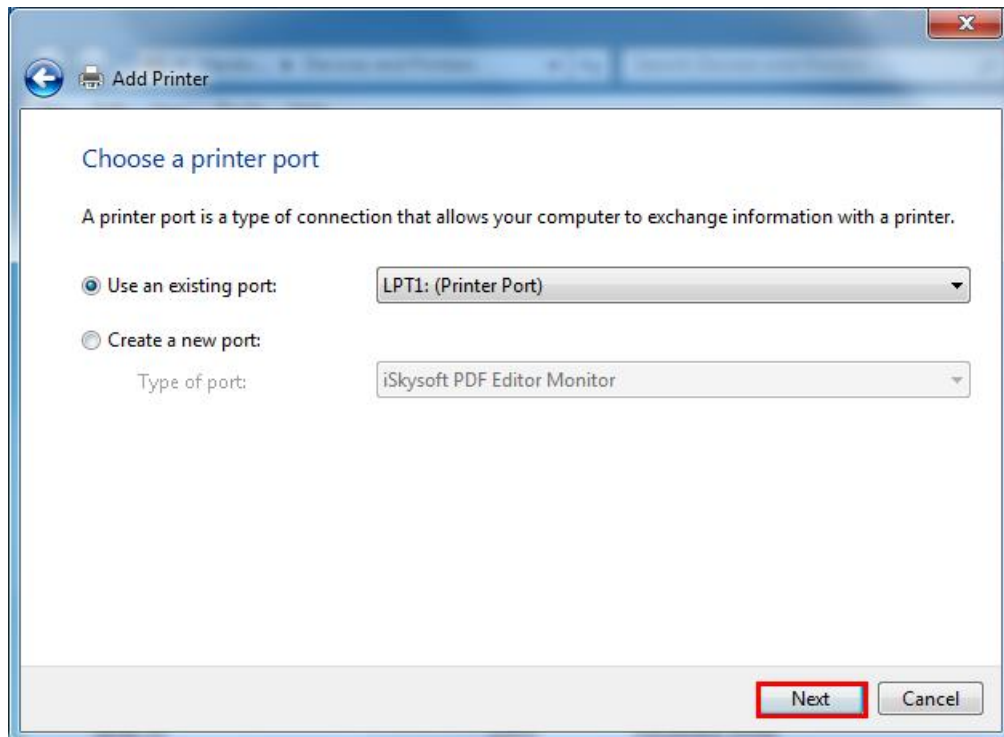
1、 Open devices and printers



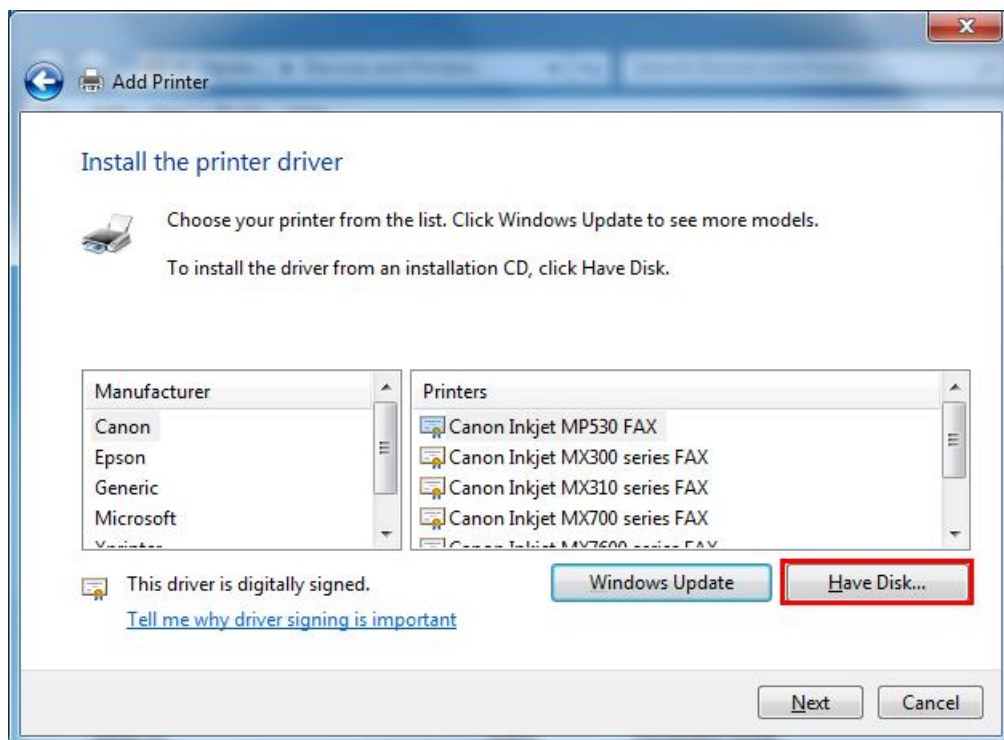
2、 Click into [add printer], click [Add local printer] then [next]



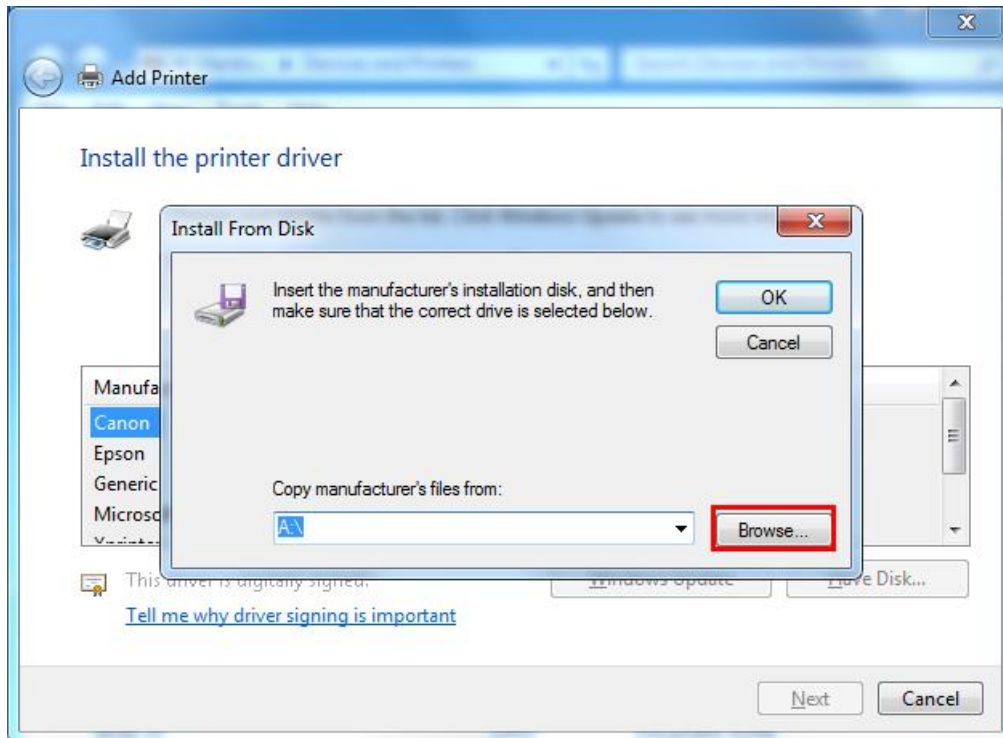
- 3、 Choose LPT port as default ,then click [next]



- 4、 Install driver from Have Disk



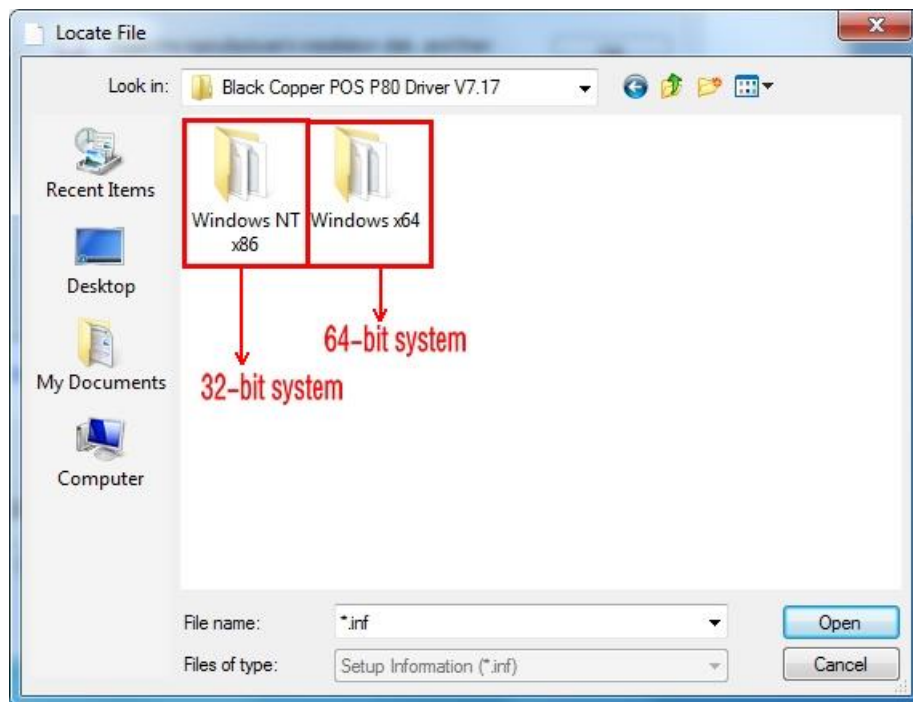
5、 Browse C driver as below



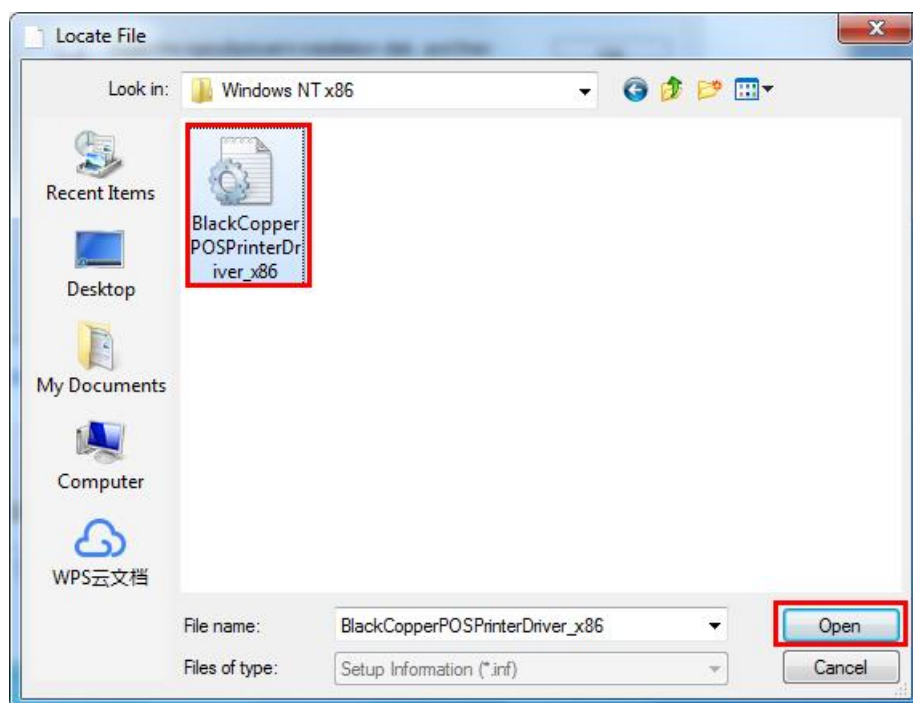
6、 Find out file folder name POS PRINTER DRIVER in My Computer C: driver



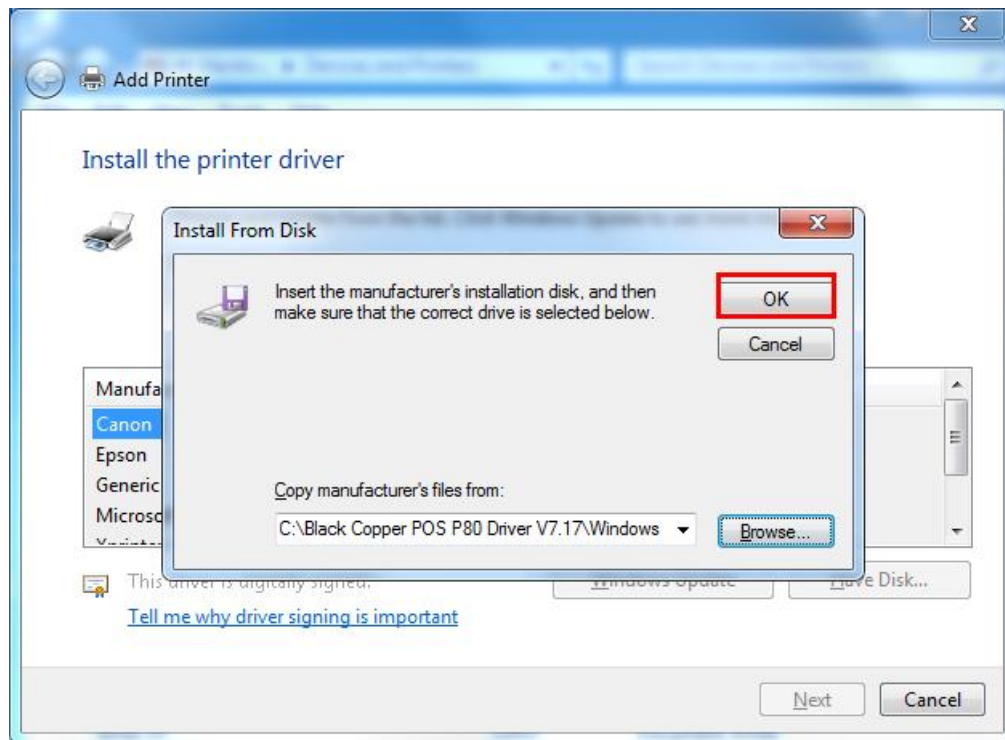
7、 Choose a right system, 32-bit or 64-bit



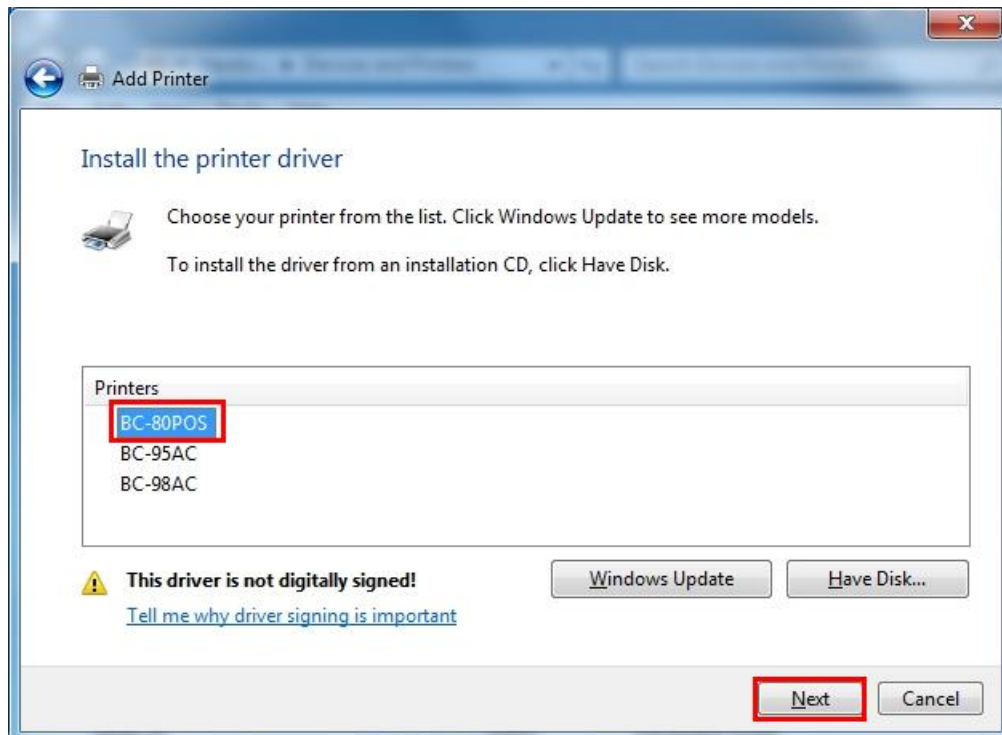
8、 Choose INF file



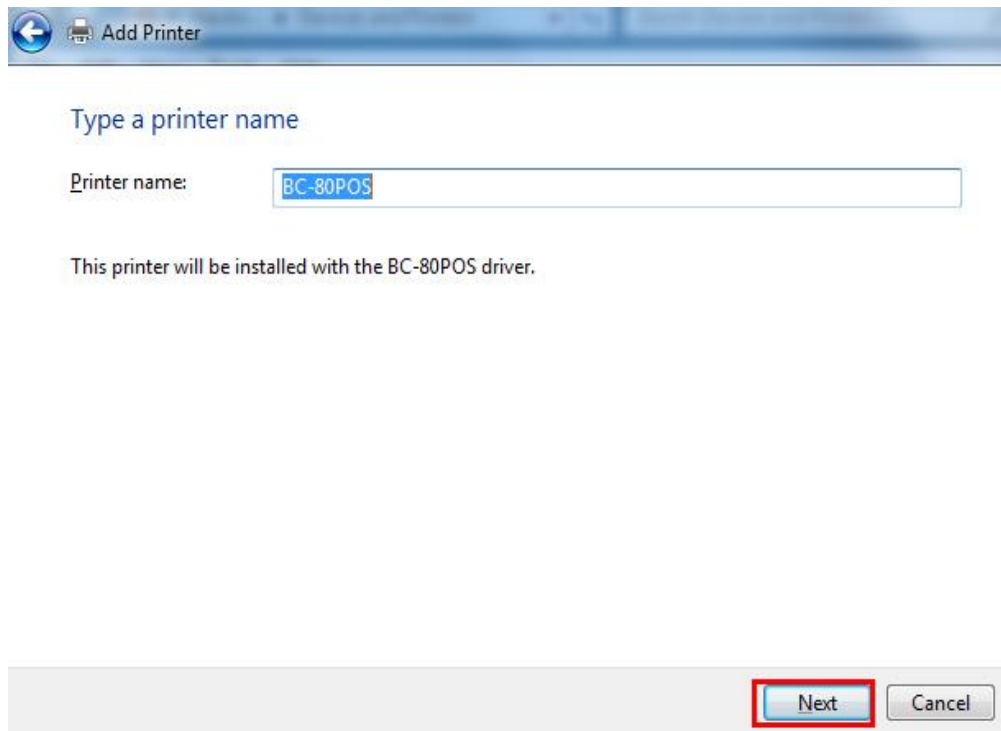
9、 Choose [OK]



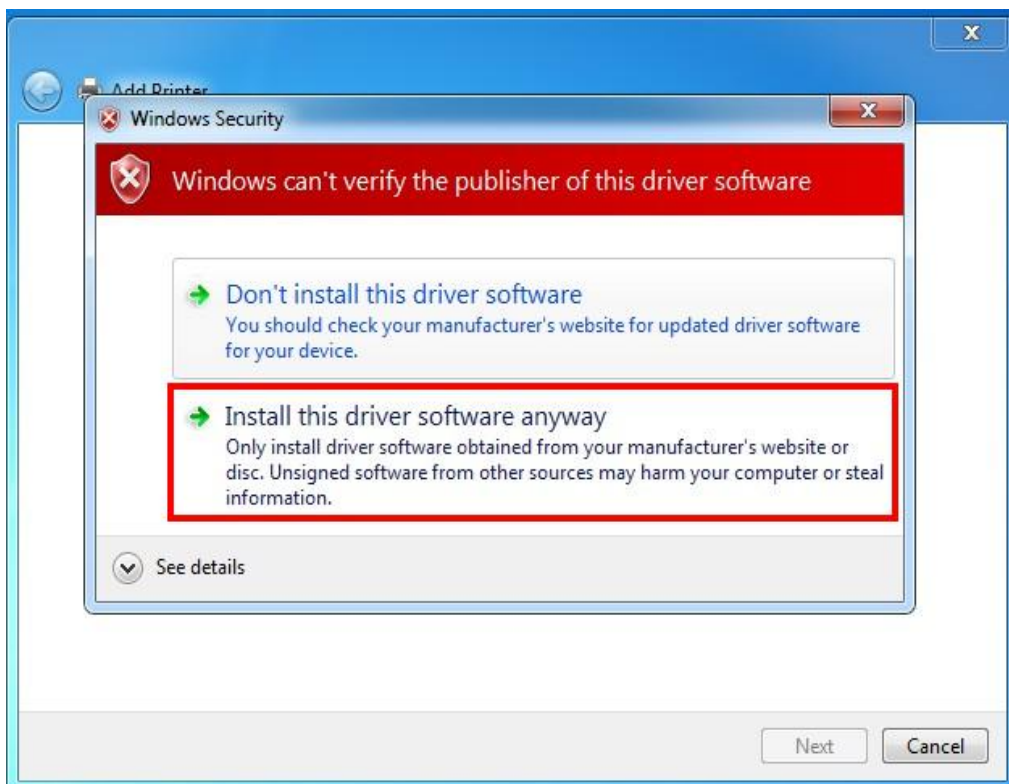
10、 Choose a corresponding printer type, then click [next]



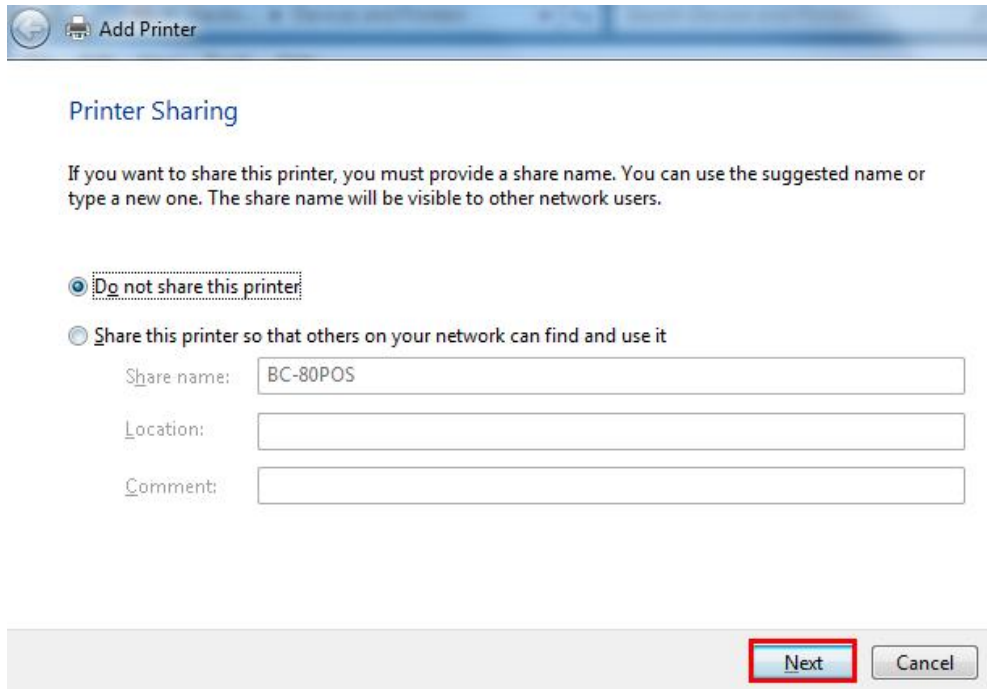
11、Click [next]



12、Choose " Install this driver software anyway"

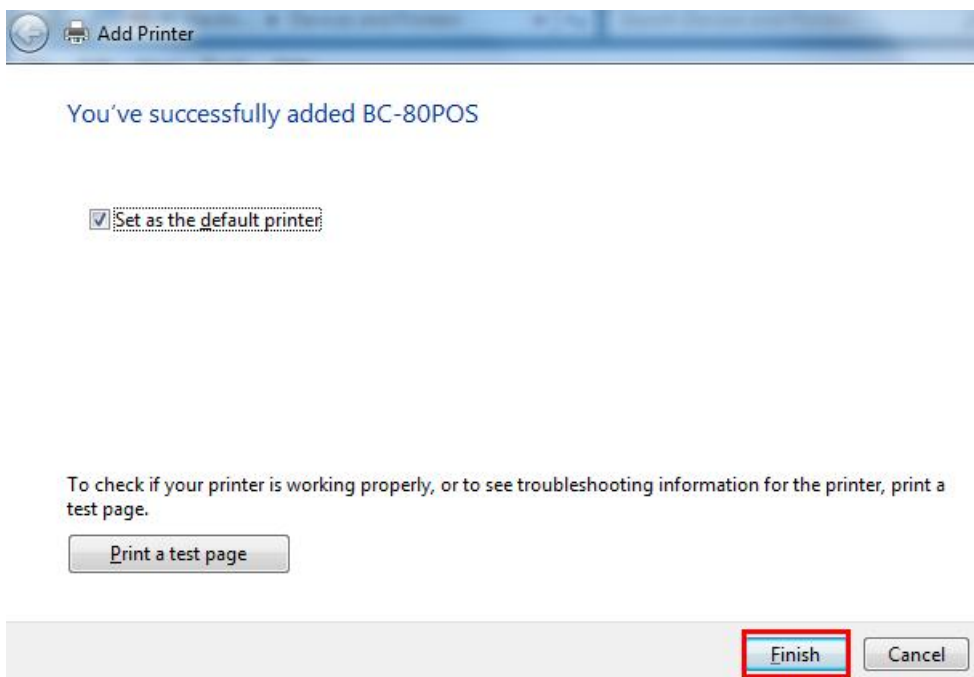


13、Click [next]



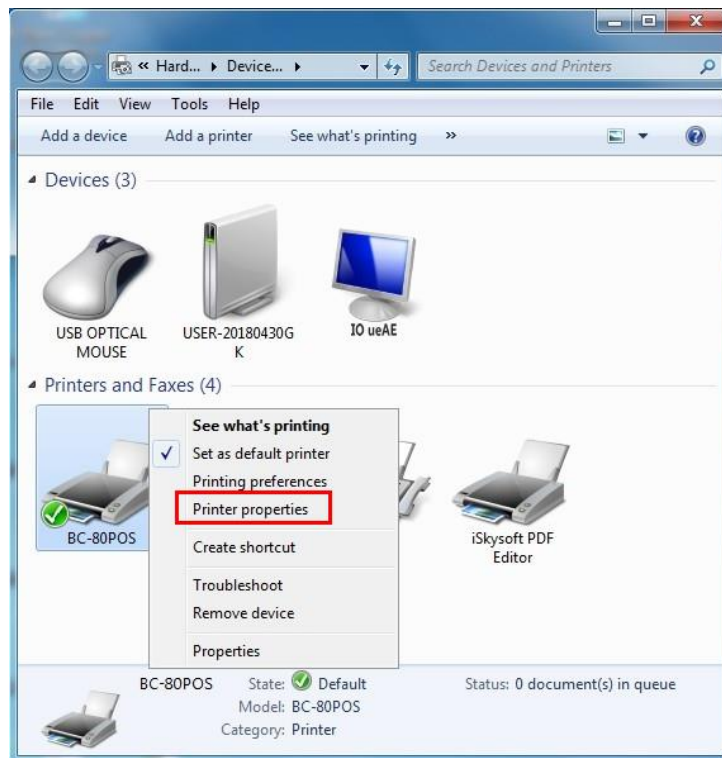
The screenshot shows the 'Add Printer' window with the 'Printer Sharing' section. The title bar says 'Add Printer'. Below the title bar, the section is titled 'Printer Sharing'. A message states: 'If you want to share this printer, you must provide a share name. You can use the suggested name or type a new one. The share name will be visible to other network users.' There are two radio button options: 'Do not share this printer' (selected) and 'Share this printer so that others on your network can find and use it'. Below the second option, there are three text input fields: 'Share name:' with the value 'BC-80POS', 'Location:', and 'Comment:'. At the bottom right, there are two buttons: 'Next' (highlighted with a red box) and 'Cancel'.

14、Click [Finish]

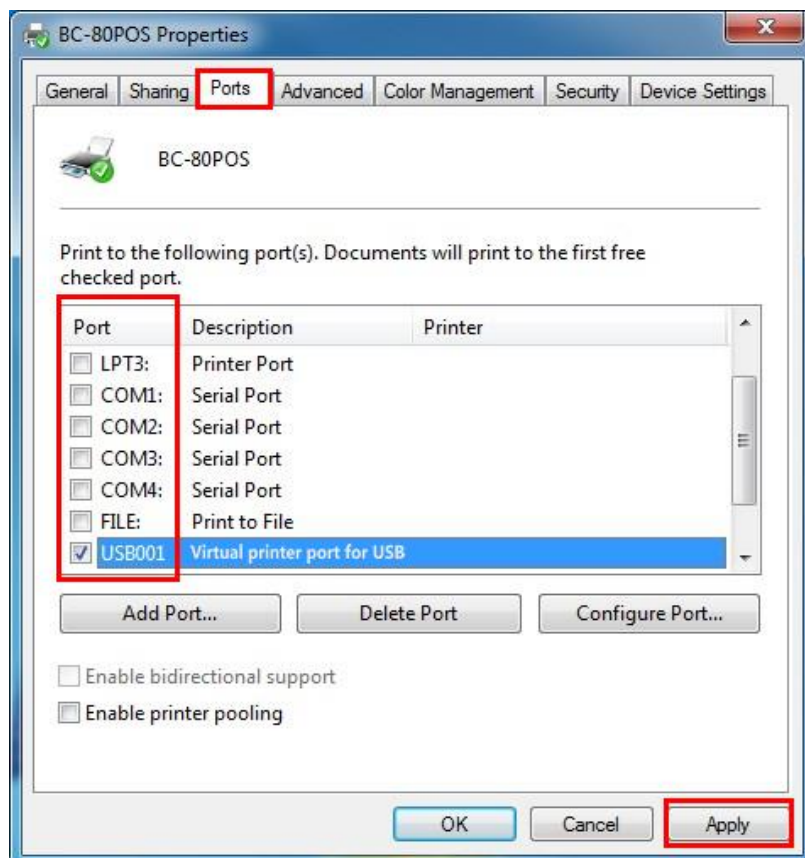


The screenshot shows the 'Add Printer' window at the completion stage. The title bar says 'Add Printer'. Below the title bar, the message reads: 'You've successfully added BC-80POS'. There is a checked checkbox labeled 'Set as the default printer'. Below this, a message states: 'To check if your printer is working properly, or to see troubleshooting information for the printer, print a test page.' Below this message is a button labeled 'Print a test page'. At the bottom right, there are two buttons: 'Finish' (highlighted with a red box) and 'Cancel'.

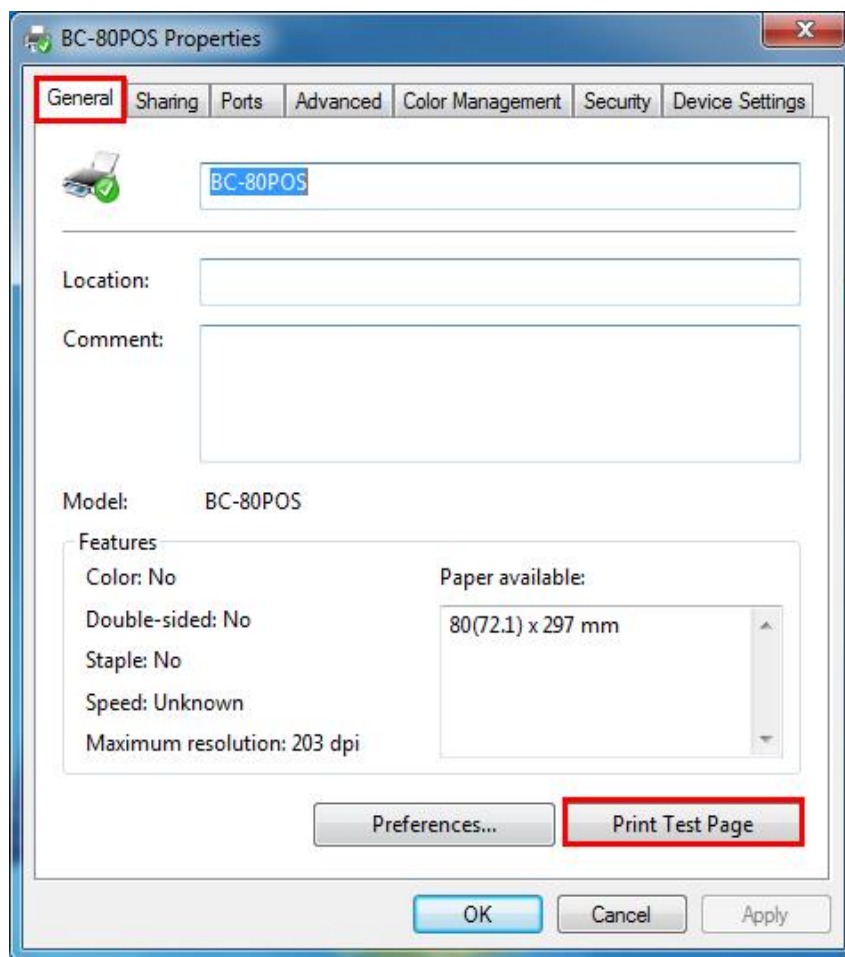
15、Click and chose printer properties



16、Choose a corresponding port, then click [Apply]



17、 Click [General], start testing and click [Print Test Page]



*Once you could print test page, said that driver installed successfully*

*Congratulations and thank you!*